

# SIGNAL LIGHT CONTROLLER

The module controls railway signal lights (semaphore).

- suitable for DC (analog) system
- output for 2-, 3- or 4-aspect signal lights
- mode is selectable by jumper:
  - mode 1: 2x 4-aspect
  - mode 2: 2x 3-aspect + 1x 2-aspect
  - mode 3: 4x 2-aspect
- terminal to 4 push buttons - press the button to change color of semaphore
- recommended power supply 8-12V AC / 10-16V DC
- 200 mA / channel (6-8 LEDs)

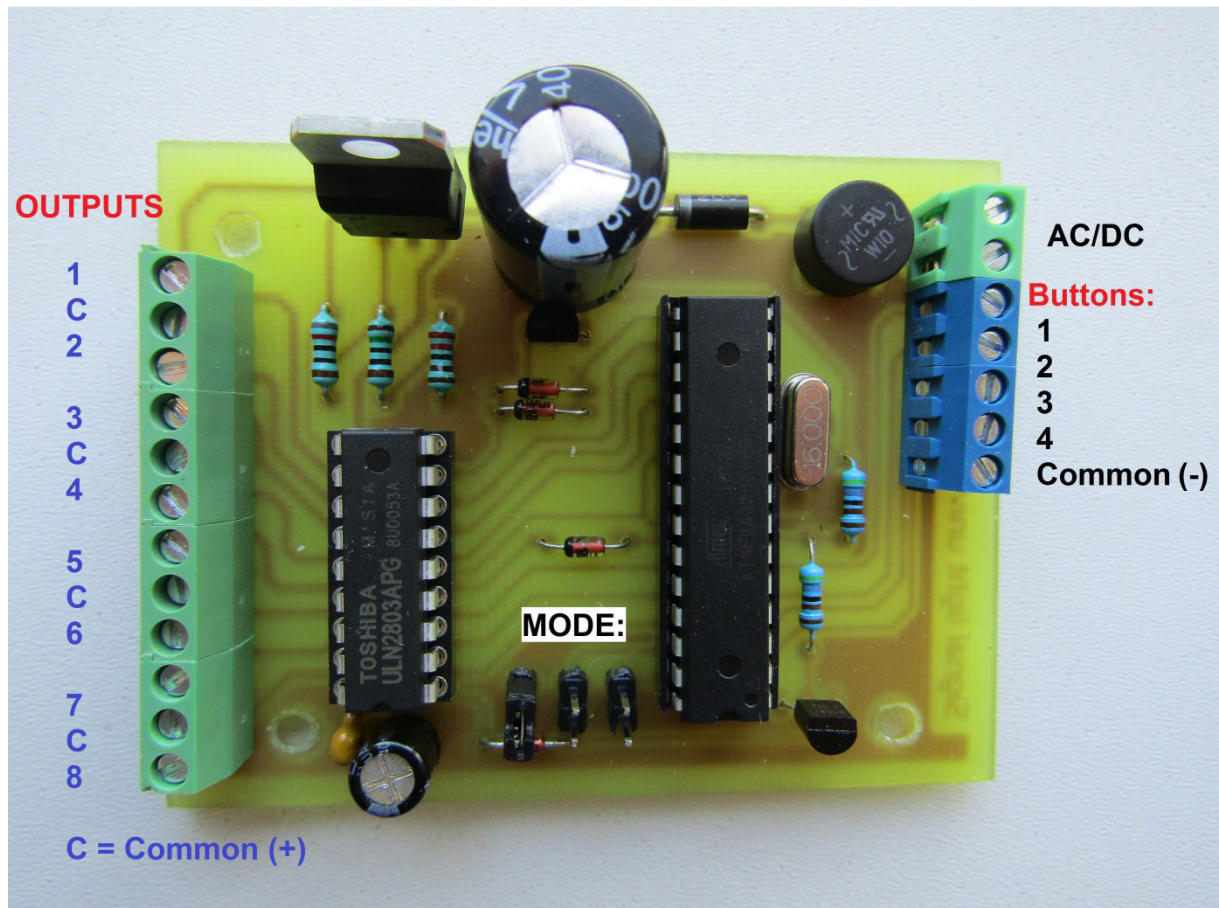
## SETTING:

- connect signal lights. Use light with common anode (positive) only!
- select mode with jumper (left to right): 4-aspect / 3-aspect / 2-aspect (if jumper is removed, the 4-aspect mode is selected as well!)
- connect switches. The common legs connect to Common(-) terminal.
- switch on power supply

**Before you change mode switch off power supply!!** (restart module)

## ATTENTION:

Do not use voltage over 20V AC or 30V DC! Do not overload outputs! Maximum output current per channel is 500mA, the module maximum current is 1500mA (1,5A). If you connect LEDs always use protection resistors.



The table shows active outputs after pressing buttons.

	OUTPUTS			
MODE	Button 1	Button 2	Button 3	Button 4
2-aspect	1	3	5	7
	2	4	6	8
3-aspect	1	4	7	
	2	5	8	
	3	6		
4-aspect	1	5		
	2	6		
	3	7		
	4*	8*		
	4**	8**		

\* output 4 (8) = permanent mode

\*\* output 4 (8) = flashing mode